

## Women in Physics and Astronomy Faculty Positions

### Highlights

- Data for these graphs were collected from a survey sent to all physics and astronomy degree-granting departments in the US in 2006. The response rate to the survey was 96%. AIP thanks all the departments for completing the survey.
- The percentages of physics and astronomy faculty positions that are held by women have increased since our last data collection efforts in 2002 and 2003. Thirteen percent of physics faculty members are women, up from 10% in 2002 (Figure 1), and 17% of astronomy faculty members are women, up from 14% in 2003 (Figure 2).
- The percentages of women physics and astronomy professors at all ranks have increased (Figures 1 and 2). At 17%, the percentage of women assistant physics professors is slightly higher than the percentage of physics PhDs earned by women in the recent past (about 13%). The percentage of women assistant astronomy professors is about the same as recent PhD production in astronomy.
- The percentage of women physicists who are instructors and adjuncts increased between 2002 and 2006 (Figure 1). This occurred at the same time that the overall percentage of physics non-tenure-track faculty members increased.
- Forty-three percent of all physics departments have no women at all on their faculties. It should be noted that most physics departments have relatively few faculty members of either sex. As Figure 3 shows, physics departments that do not grant graduate degrees (median number of faculty =4) are less likely to have women faculty members than larger, PhD-granting physics departments.
- The percentage of PhD-granting physics departments that have multiple women on their faculties is increasing rapidly. In 2002, 20 PhD-granting physics departments had four or more women faculty members. In 2006, 21 PhD-granting physics departments had *five* or more women on their faculties (Figure 4). These are listed in Figure 5.
- Twenty-two percent of the new physics faculty members hired for 2006-2007 are women (Figure 6). One-fourth of new assistant physics professors are women. Again, this is higher than the percentage of women among recent physics PhD recipients. Whether the percentages of full and associate female professors will continue to increase will be shown in future rounds of this survey.

**Figure 1. Percent of faculty positions in physics held by women.**

	<b>1998</b>	<b>2002</b>	<b>2006</b>
<b>Academic Rank</b>			
Full Professor	3	5	6
Associate Prof.	10	11	14
Assistant Prof.	17	16	17
Instructor/Adjunct	N/A	16	19
Other ranks	13	15	12
<b>Type of Department</b>			
PhD	6	7	10
Master's	9	13	16
Bachelor's	11	14	19
<b>OVERALL</b>	<b>8</b>	<b>10</b>	<b>13</b>

Figure 2. Percent of astronomy faculty positions held by women.

Academic Rank	2003	2006
Full professor	10	11
Associate professor	23	24
Assistant professor	23	28
Instructor/Adjunct	15	15
Other Ranks	15	21
Overall	14	17

Source: AIP Statistical Research Center.  
Stand-alone astronomy departments only.

**Figure 3. Percent of physics departments with women faculty in professorial ranks, 2006**

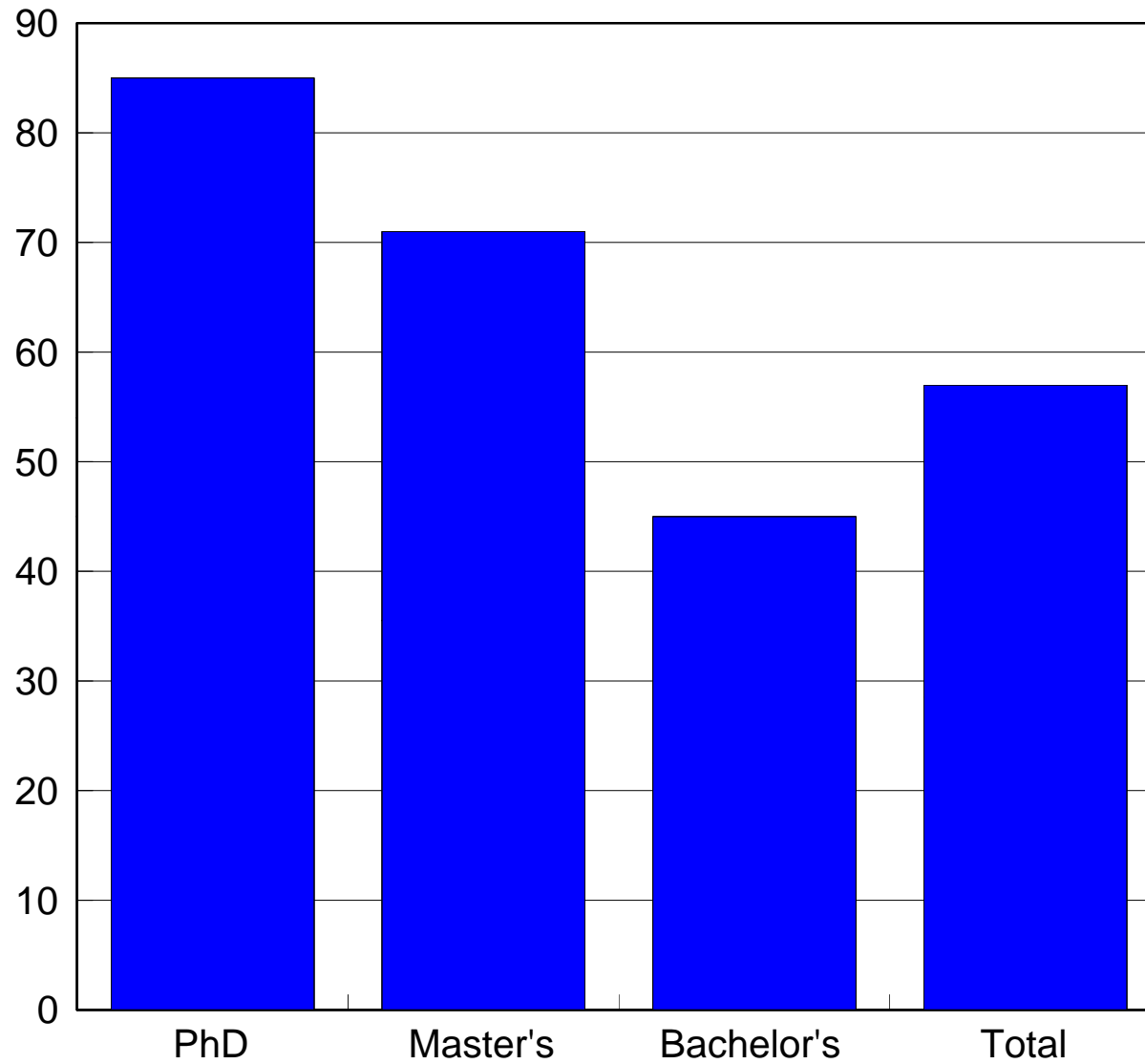
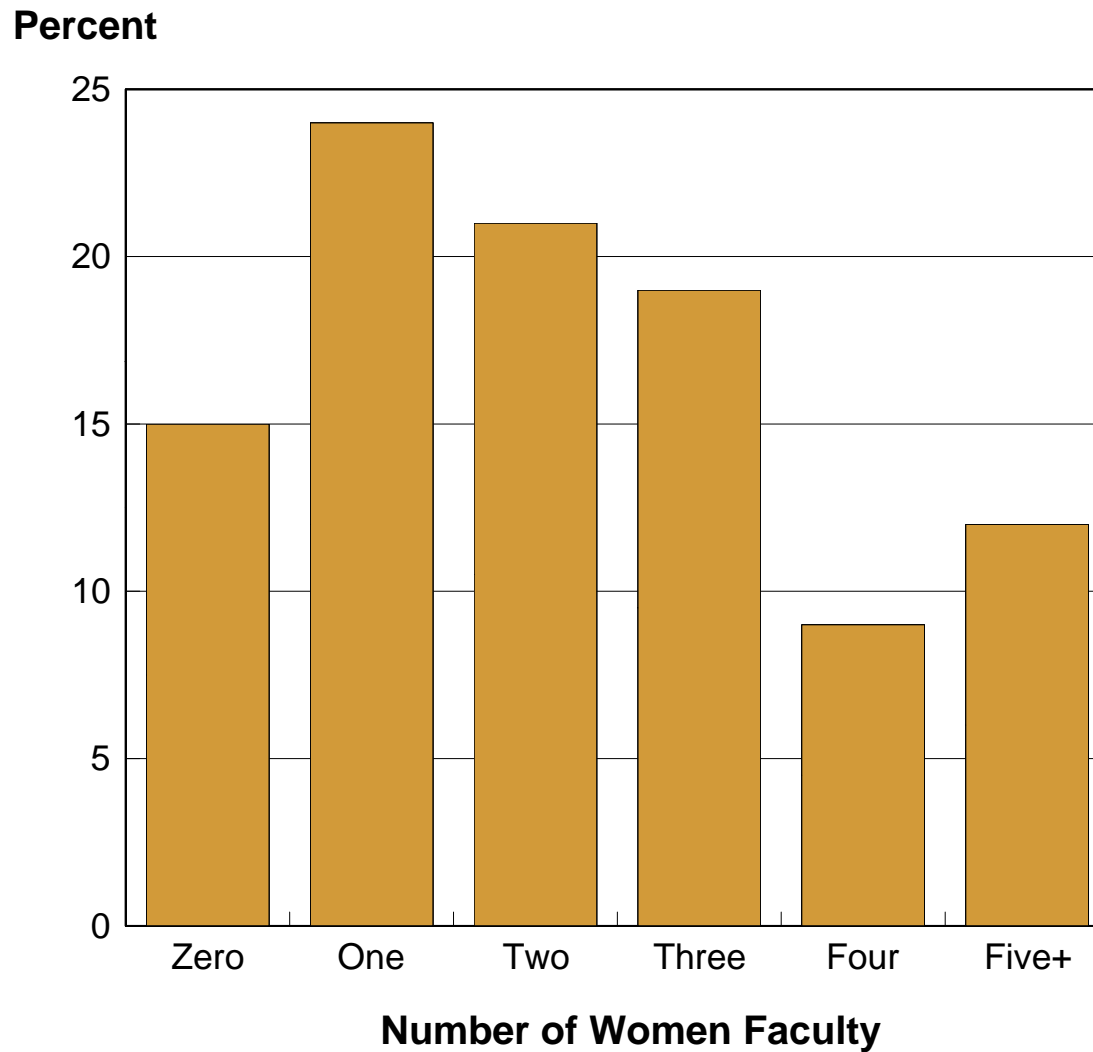


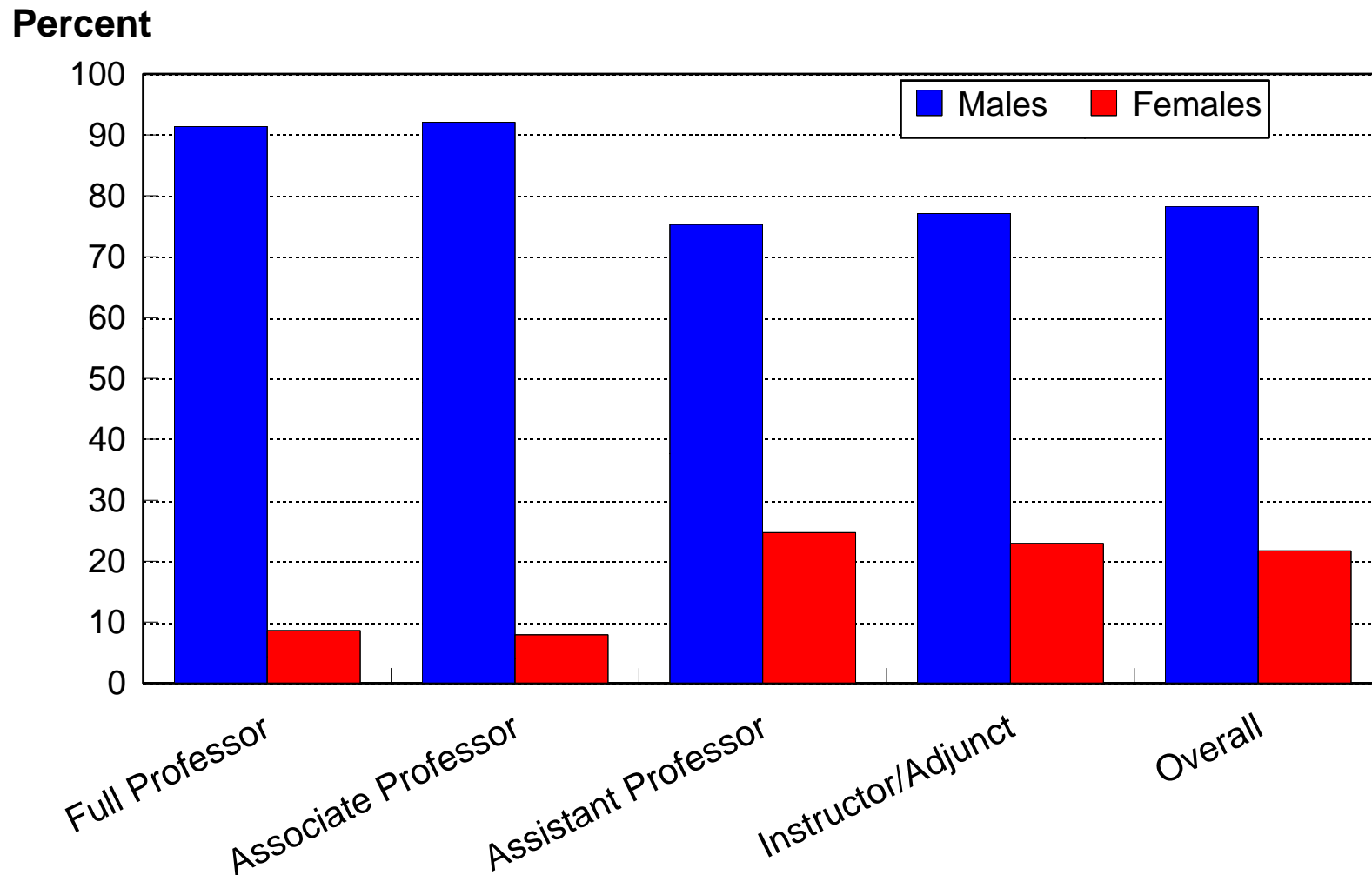
Figure 4. Percent of PhD physics departments by number of women in professorial ranks, 2006



**PhD Physics Departments with  
Five or More Women on Faculty, 2006**

California Institute of Technology	Maryland, University of (College Park)
California, University of (Berkeley)	Massachusetts Institute of Technology
California, University of (Davis)	Michigan, University of (Ann Arbor)
California, University of (Irvine)	North Carolina State University
California, University of (Los Angeles)	Notre Dame, University of
California, University of (Riverside)	Pennsylvania (University of)
Colorado, University of (Boulder)	Rutgers University, New Brunswick
Dartmouth College	Stanford University
Harvard University	Washington, University of
Illinois, University of (Urbana-Champaign)	Wisconsin, University of (Madison)

**Figure 6. Current positions of new physics faculty by gender, 2006**



AIP Statistical Research Center, 2006 Academic Workforce Survey.